

# Spindle ball bearing SM 6016 C TXM P4+

16.07.2024



## Components

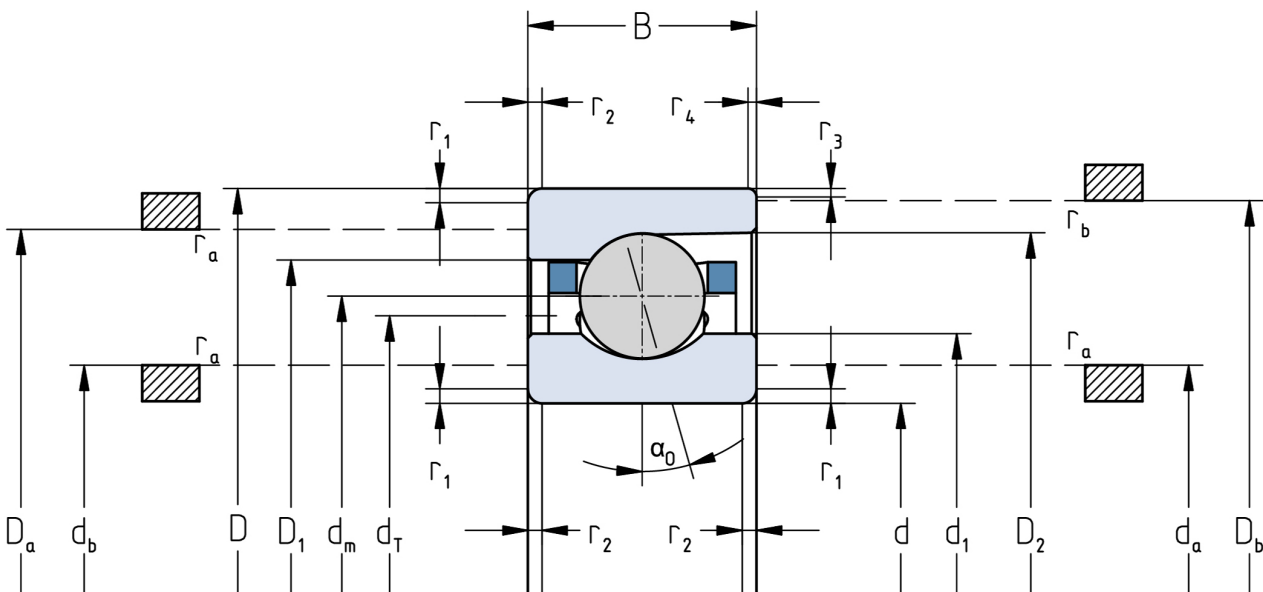
Bearing designation:	SM 6016 C TXM
Bearing design:	SM
Series / size:	6016
Ball material:	Steel 100Cr6
Cage:	TXM
Precision:	P4+
Main dimensions [d x D x B]:	80 x 125 x 22 mm

## Load data

Static load capacity	$C_{0r}$ : 31000 N
Dynamic load capacity	$C_r$ : 43000 N
Fatigue load limit	$C_U$ : 1594 N
Speed limit	$n_{grease}$ : 14625 1/min
Speed limit	$n_{oil}$ : 19500 1/min
Light preload	L: 220 N
Axial rigidity	$C_{ax}$ : 86 N/ $\mu$ m
Medium preload	M: 650 N
Axial rigidity	$C_{ax}$ : 130 N/ $\mu$ m
Heavy preload	S: 1300 N
Axial rigidity	$C_{ax}$ : 174 N/ $\mu$ m
Spring preload	Ff: 1980 N (for $n_{max}$ )

## Geometrical Data

Bore diameter	d: 80 mm	Oiling nozzle position	$d_T$ : 98.6 mm
Outer diameter	D: 125 mm	Pitch circle diameter	$d_m$ : 102.5 mm
Width of single bearing	B: 22 mm	Inner diameter of outer ring	$D_1$ : 110.7 mm
Ball diameter	$D_w$ : 13.494 mm	Undercut of associated component	$r_{a max}$ : 1 mm
Number of balls	Z: 20	Undercut of associated component (open side)	$r_{b max}$ : 0.6 mm
Chamfer (min)	$r_{1,2 min}$ : 1.1 mm	Abutment diameter inner ring	$d_{a,b min}$ : 87.7 mm
Chamfer (min), open side	$r_{3,4 min}$ : 0.6 mm	Abutment diameter outer ring	$D_{a,b max}$ : 118.7 mm
Outer diameter of inner ring	$d_1$ : 94.3 mm	Inner diameter of outer ring (open side)	$D_2$ : 116.2 mm
Outer diameter of inner ring (open side)	$d_2$ : -	Bearing weight	m: 0.84 kg
		Contact angle	Alpha 0: 17°



The given speed limits apply to individual bearings with spring preload. Correction factors must be considered for all properties which deviate from this.