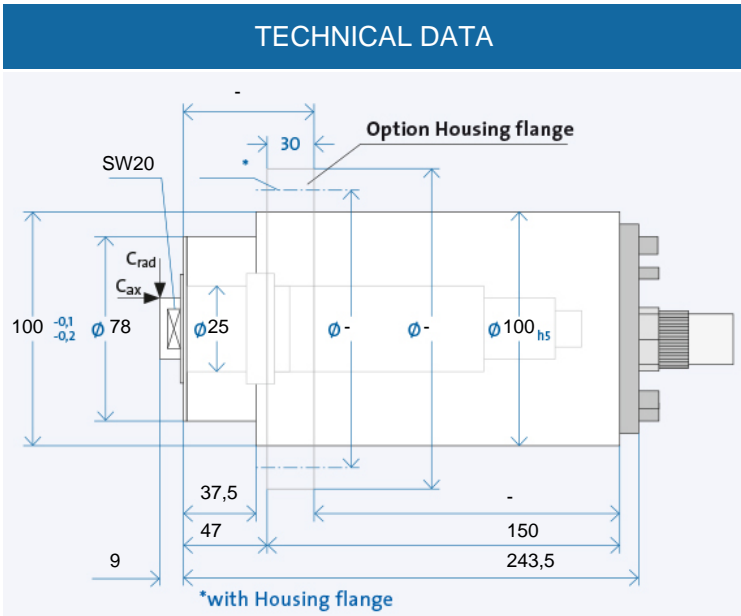


# UHS 100 - 90000/5



Technical data		
Spindle housing- $\varnothing$	A	[mm]
Speed max.	$n_{max}$	[min <sup>-1</sup> ]
Bearing; front	$W_1$	[mm]
Tool interface		
Flat layout- $\varnothing$	W	[mm]
Static rigidity		
axial	$C_{ax}$	[N/ $\mu$ m]
radial	$C_{rad}$	[N/ $\mu$ m]
Motor realization		
Frequency max.	$f_{max}$	[Hz]
Converter voltage <sup>1)</sup>		[V]
Power	$P_{S1}$	[kW]
Torque	$M_{S1}$	[Nm]
... at speed	$n$	[min <sup>-1</sup> ]
Current	$I_{S1}$	[A]
Power	$P_{S6-60\%}$	[kW]
Torque	$M_{S6-60\%}$	[Nm]
... at speed	$n$	[min <sup>-1</sup> ]
Current	$I_{S6-60\%}$	[A]

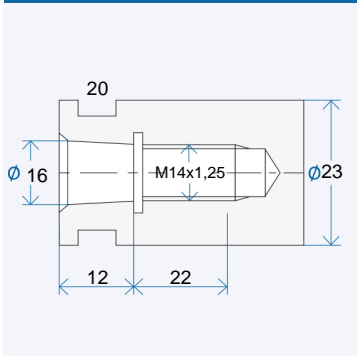
UHS 100 - 90000/5		
100		
90000		
25		
U 16/23		
23		
57		
58		
200V	350V	-
1500		
200V	350V	-
4,4		
0,467		
90000		
17	9,7	-
5		
0,531		
90000		
19	11	-



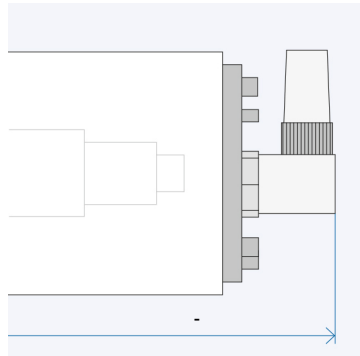
Electrical connection		
Plug type	B040	B040
Straight plug connection	+	-
Coil plug connector	o	-
Fixed cable XXm	o	-
Coolant feed through the shaft		
Low pressure (du)		o
High-pressure (dh)		-
Sensors		
Rotary encoder		-
Speed sensor		+
Housing		
Cylindrical housing		+
Cylindrical housing with flange		o
Block housing		x
Air-tight seal		o

B040	B040	-
+	+	-
o	o	-
o	o	-
	o	
	+	
	+	
	o	
	x	
	o	

## INTERNAL TAPERS WITH A FLAT



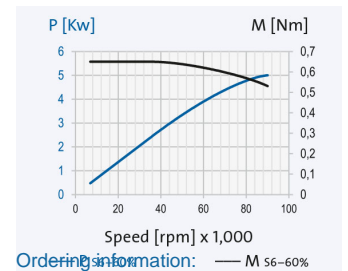
## ANGLED PLUG OPTION



The data currently provided on the internet apply. Further and detailed information is provided in the GMN 2508 catalogue.

<sup>1)</sup> Minimum required starting voltage for the frequency converter.

- + Standard
- o Optional
- x Upon request



Ordering information:  
 + UHS 100 - 90000/5  
 R is for clockwise, L for counter-clockwise

**GMN**

High-speed tool spindles for manual tool change

+ Desired options  
[www.gmn.de](http://www.gmn.de)

# UHS 100 - 90000/5

# UHS 100 - 90000/5



## Delivery contents

Spindles in the UHS series are basically available as a complete system. Items included in delivery are:

- Spindle
- Frequency converter (including motor throttle if needed)
- Lubrication system
- Cable (spindle - frequency converter), supply line
- Hose lines for oil-air lubrication



## Frequency converter

Minimizes heating of high-rotational synchronous motors in the UHS series, which are only allowed for limited over-temperatures due to the low rotor volumes (also suitable for asynchronous motors). The required operating parameters are pre-programmed.



## Lubrication system

The electronically controlled PRELUB lubrication unit is optimally adapted to the oil-air lubricated GMN spindles and guarantees a long service life.



## Cable and hose device

Each 5 meters long.

Also options with special lengths. Please request.

## Accessories



## Cooling system

GMN cooling units ensure precisely adjustable temperature and quantity delivery of the coolant and achieve consistently low operating temperatures.